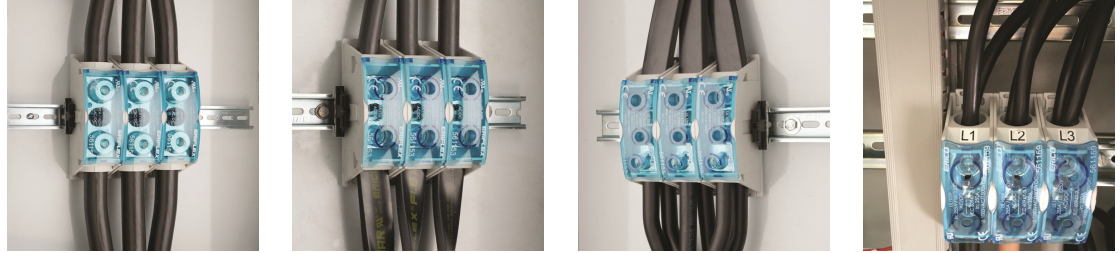
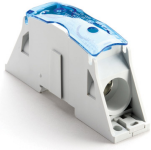
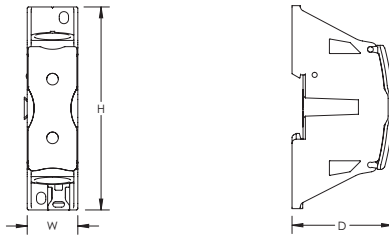


Power Block – SB160AL (561162)



nVent ERIFLEX Power Blocks are the main DIN mounted output/input devices for connection between primary and secondary switchboard, or main input/output connection for machine or industrial equipment (such as inverter, air conditioning machines, etc.). The high short circuit rated large cross section blocks offer time savings and reliability in every panel configuration. The complete Power Blocks range offers multiple connection types with up to four cables, nVent ERIFLEX Flexibar Advanced, or IBS/IBSB Advanced power braids.

- Can be connected with round cross section cable or flat connection system like nVent ERIFLEX Flexibar Advanced or IBS/IBSB Advanced Insulated Braided Conductor
- Compact power block with high short circuit current rating
- Tinned copper or aluminum block allows for copper or aluminum conductor direct connections, or using ferrule
- Screw retaining cover is hinged and removable
- Design allows for visual inspection of conductor and confirmation of connection
- Modular snap-together blocks for building multi-pole power blocks
- Easily clips onto DIN rail or mounts to panel with screws
- Voltage detection and measurement connection
- 95% fill ratio
- Halogen free
- RoHS compliant



Part Number	SB160AL
Article Number	561162
Finish	Tinned
Type	Cable-Cable
Typical Application Current Rating, UL	200 A
Material	Aluminum Thermoplastic
Line Side Max Conductor Size, UL	3/0 AWG
Load Side Max Conductor Size, UL	3/0 AWG
Max Current Rating, IEC	230 A
Max Current Rating, UL/CSA	200 A
Peak Short Circuit Current (I _{pk})	42 kA
Short Circuit Current Rating (SCCR)	100 kA
Max Working Voltage, IEC (U _i)	1,000 VAC

Part Number	SB160AL
	1,500 VDC
Max Working Voltage, UL (Vin)	1,000 VAC/DC
Line Side Number of Connections	1
Line Side Compact Stranded Wire Size	35 - 70 mm ² #2 - 3/0
Load Side Compact Stranded Wire Size	35 - 70 mm ² #2 - 3/0
Load Side Number of Connections	1
Load Side Stranded Wire Size - Ferrule	35 - 70 mm ²
Depth (D)	2.16"
Height (H)	4.37"
Width (W)	1.09"
Unit Weight	0.22 lb
Certification Details	UL® 1059
Complies With	IEC® 60947-7-1
Enclosure Rating	IP 20
Flammability Rating	UL® 94V-0
Certifications	CE, ERIFLEX SB cURus RoHS
Standard Packaging Quantity	1 pc
UPC	78285691268
EAN-13	8711893155181

Design Guideline for Distribution Blocks, Power Blocks and Power Terminals										
Derating according to Ambient* Temperature (°F) to maintain working temperature of 185°F										
Ambient Temperature (°F)	86°	95°	104°	113°	122°	131°	140°	149°	158°	167°
Derating Coefficient (d)	1	1	1	0.94	0.88	0.82	0.75	0.67	0.58	0.47
*environment around the terminal blocks inside the enclosure										

SBF250 is UL® 1953 Listed when used with SB250SPCR. Max Working Voltage for UL 1953 applications is 1250 VAC/DC.

IEC is a registered trademark of the International Electrotechnical Commission. UL, UR, cUL, cULus and cURus are registered certification marks of UL LLC.

© 2019 nVent All rights reserved
nVent, nVent CADDY, nVent ERICO, nVent ERIFLEX and nVent LENTON are owned by nVent or its global affiliates.
All other trademarks are the property of their respective owners. nVent reserves the right to change specifications without prior notice.